



Hillrom™



TruPort™ Supply Unit Accessories Brochure

READY FOR EVERY ASSIGNMENT

Accessories for the TruPort™ Supply Unit: optimized for daily use.

Medical workstations in ICUs and operating rooms are subject to new challenges and modifications almost every day. Whereas more and more devices and instruments are improving medical care, the users are looking for more flexible and powerful supply systems for their daily work. The focus is on the safety of patient and nursing staff as well as ergonomics and efficiency at the medical workstation.

The TruPort™ Supply Unit and accessories combine to meet your requirements. The modular design allows the user to integrate new accessories at any time and to adjust the workstation to changing requirements. Thanks to the click mechanism of the accessories and the M and MPC Rail technology of the TruPort™ Supply Unit, it is a quick process with no tools required. While the M rail integrated in the support head of the TruPort™ Supply Unit is only used to mount accessories, additional equipment can be attached to the optional MPC rail which uses low voltage power. Function commands are forwarded via a BUS system (MPC = Mounting, Power, Communication).

Select from a variety of accessories for the TruPort™ Supply Unit – designed from many years of experience. Every single product is optimized for daily use. Benefit from the simplicity and flexibility of the system for initial installation and modifications to meet your needs.

These modularity features make the TruPort™ Supply Unit one of the most efficient and future-proof supply systems in the world.



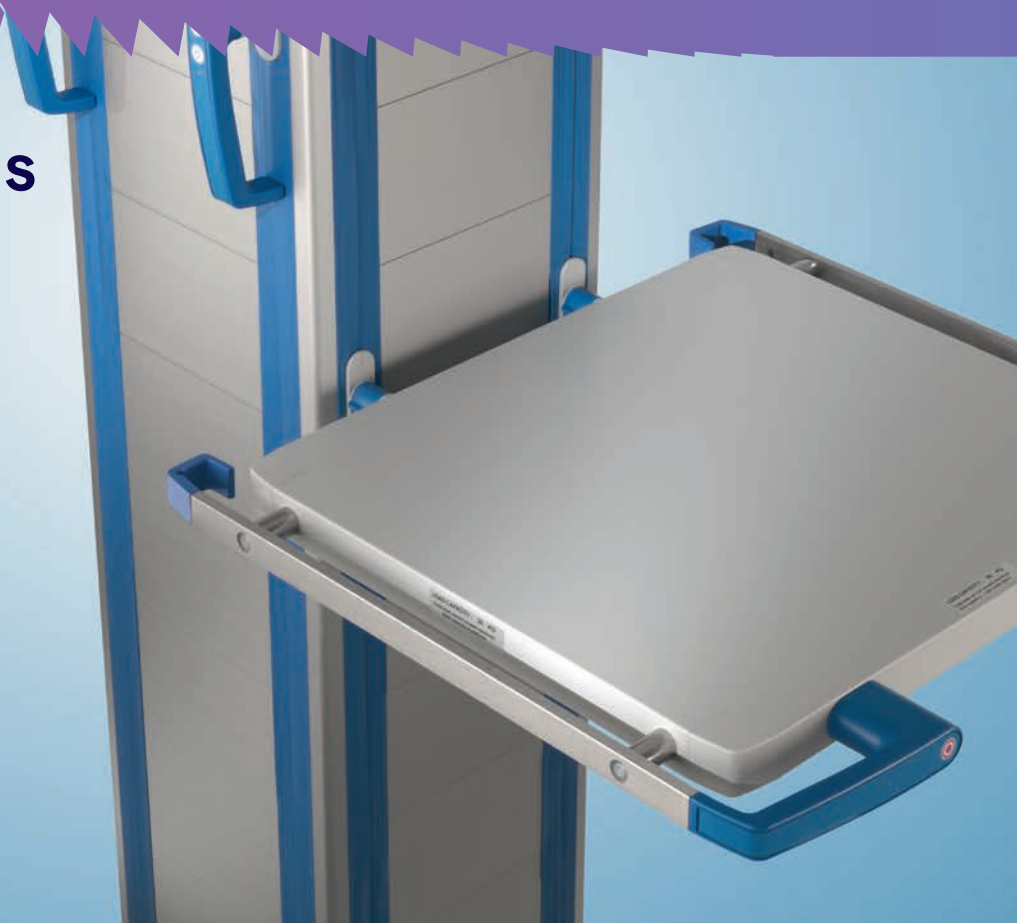
CONTENTS

Control options	4	Equipment rails	32
Shelves	8	Cable management	34
Drawers	14	Infusion management	36
Lighting	18	Device holders	40
Monitor holders	22	General accessories	42
Lifting systems	28		
Equipment transport	30		



Control options

The various control options enable you to operate the brakes and the height adjustment of the pendant arms in any desired position – for easy access and an ergonomic working position.



The functions can be operated using the following control options: Control module directly on the pendant, control handles on the shelves, directly on the pendant, or cable remote control. MPC-rail versions enable the simultaneous use of several control options per system head.

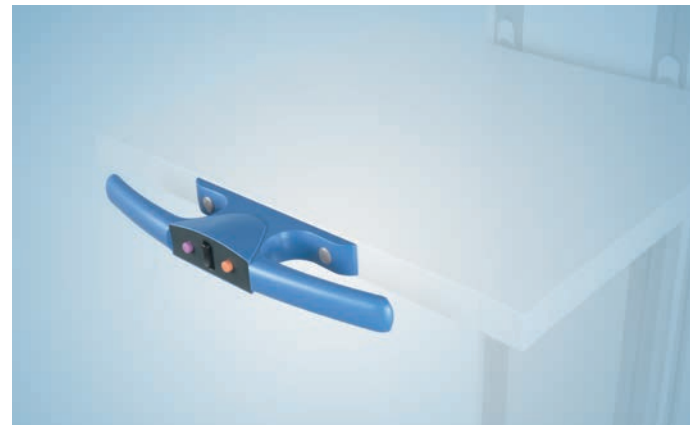


Operating module (M Rail)

Control module integrated in the system head for easy access to adjust the pneumatic brakes and pendant height.

- Available for M Rail version
- Available for the M and L SIZE of the system head
- Position changes in graduations of +/- 125 mm (4.9") possible with dedicated tool
- One control option per system head

Operating module TruPort · Mat. No. 1851209



Operating handle, platform (ML)

Control handle integrated in the shelf for easy access to adjust the pneumatic brakes and pendant height.

- Available for M Rail version
- Position change in the range of every 20mm without tool possible
- One control option per system head

Operating handle shelf ML · Mat. No. 1851208



Operating handle extension (M Rail)

Control handle with extension for easy access to adjust the pneumatic brakes and pendant height. Recommended for pendants fitted with a large number of medical devices.

- Available for M Rail version
- Available for the L and M system head
- Ideal for infusion system heads with fluid management systems
- Extension, 100 mm (3.9")
- Position change in the range of every 20mm without tool possible
- One control option per system head

Operating handle TruPort exten. M Rail · **Mat. No. 1904720**



Operating handle, platform (HL)

Control handle integrated in the shelf for easy access to adjust the electropneumatic brakes and pendant height.

- Available for MPC Rail version
- Flexible position change via click mechanism
- Multiple control options available per system head

Operating handle shelf HL · **Mat. No. 1636351**



Operating handle, vertical (MPC Rail, Set)

Control handle directly mounted at the system head for easy access to adjust the electropneumatic brakes and pendant height.

- Available for MPC Rail version
- Flexible position change via click mechanism
- Multiple control options available per system head

Operating handle TruPort vertical (set) · **Mat. No. 1636396**



Operating handle extension (MPC Rail)

Control handle with extension for easy access to adjust the electropneumatic brakes and pendant height. Recommended for pendants fitted with a large number of medical devices.

- Available for MPC Rail version
- Available for the L and M system head
- Ideal for infusion system heads with fluid management systems
- Extension, 320 mm (12.6")
- Flexible position change via click mechanism
- Multiple control options available per system head

Operating handle TruPort exten. MPC Rail · **Mat. No. 1771218**



Remote control (MPC Rail, Set)

Cable remote control for easy access to adjust the electro-pneumatic brakes and pendant height.

- Available for MPC Rail version
- Attached to equipment rails 25 x 10 mm, 30 x 10 mm (1.0" x 0.4", 1.1" x 0.4"), Uniflex and Duoflex
- Flexible position change via click mechanism
- Multiple control options available per system head

Remote control TruPort (set) · **Mat. No. 1636397**

Shelves

Shelves of different sizes provide space for various medical devices – on each side and any length of support head for individual workplace positioning.



For the TruPort™ Supply Unit we offer shelves in five heavy load versions (HL – 80 kg / 176 lbs) and two medium load versions (ML – 50 kg / 110 lbs) of various sizes. The shelves can be mounted to the system head without tools by means of the click mechanism.



Extension platform

Extension for load shelves, 480 mm (18.9") deep.

- Available for ML and HL and MPC Rail version
- Available for the L side of the system head
- Extension of the shelf (ML) by 70 mm (2.8")
- Payload of the platform with extension max. 50 kg (110 lbs)

Extension shelf · **Mat. No. 1793618**



Equipment rail, platform (ML, Set)

Optional equipment rail (V2A) for attachment to medium load shelves.

- Available for M and MPC Rail version
- For mounting on the sides of the shelf
- Max. payload of the standard rails 20 kg (44 lbs)
- Dimensions: 25 x 10 mm (1.0" x 0.4")

Equipment rail shelf ML (set) · **Mat. No. 1851210**



Platforms (ML)

Medium load shelf – payload 50 kg (110 lbs).

- Available for M and MPC Rail version
- Available for the L and M system head
- Flexible position changes via click mechanism
- Max. payload 50 kg (110 lbs)
- Up to 2 drawers (ML), optional (max. height 250 mm / 9.8")
- Side equipment rails and control handle, optional

Options (W x D in mm):

Shelf 530 x 480 ML (20.9" x 18.9") · **Mat. No. 1851042**

Shelf 630 x 480 ML (24.8" x 18.9") · **Mat. No. 1851045**

Expandable with following adaptor plates:

Adapter plate Dräger V500 · **Mat. No. 1946414**

Adapter plate Dräger Evita 1– 4 / Dura · **Mat. No. 1906974**

Adapter plate Nellcor 800 u 840; 1.6 kg (3.5 lbs) · **Mat. No. 1952847**

Adapter plate Siemens MAQUET Servo; mounting version 1 ·

Mat. No. 1952849

Adapter plate Siemens MAQUET Servo; mounting version 2 ·

Mat. No. 1952892

The adapter plates are suitable for dock-on trolley and for all shelves starting from a width of 530 mm (20.9").



Operating handle, platform (ML)

Control handle integrated in the shelf for easy access to adjust the electropneumatic brakes and pendant height.

- Available for M Rail version
- Position change in the range of every 20mm without tool possible
- One control option per system head

Operating handle shelf ML · **Mat. No. 1851208**



Equipment safety corners (Set)

Positioning corners for medium load and heavy load shelves for the attachment of monitors and other devices.

- Available for all shelves

FIX-POS equipment safety corners · **Mat. No. 0337022**



Shortened platform (HL)

Heavy load shelf – payload 176 lbs (80 kg).

- Available for M and MPC Rail version
- Available for the L side of the system head
- Incl. side equipment rails, 25 x 10 mm (1.0" x 0.4"), V2A
- Flexible position change via click mechanism
- Max. payload 80 kg (176 lbs)
- Control handle, optional
- Instrument trays, optional (ONLY for MPC Rail version)
- Dimensions (W x D): 430 x 260 mm (16.9" x 10.2")

Shelf 430 x 260 HL · **Mat. No. 1636316**



Extension platform

Extension for heavy load shelves, 480 mm (18.9") deep.

- Available for M and MPC Rail version
- Available for the L side of the system head
- Extension of the shelf (HL) by 70 mm (2.8")
- Reduction of the payload to 50 kg (110 lbs)

Extension shelf · **Mat. No. 1793618**



Operating handle, platform (HL)

Control handle integrated in the shelf for easy access to adjust the electropneumatic brakes and pendant height.

- Available for MPC Rail version
- Flexible position change via click mechanism
- Multiple control options available per system head

Operating handle shelf HL · **Mat. No. 1636351**

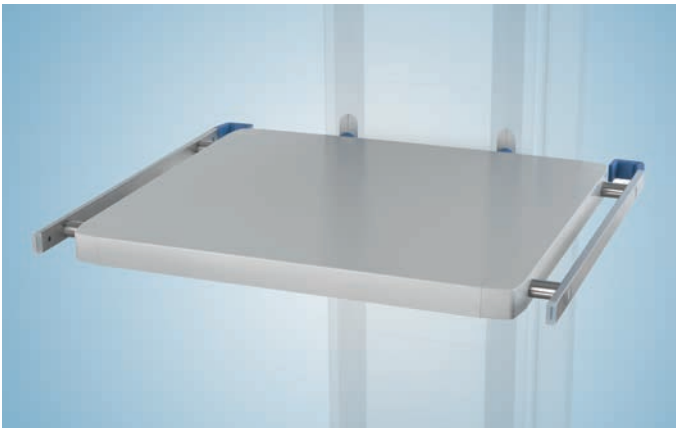


Shortened instrument tray

Instrument tray for heavy load shelves, for depositing sterile surgical instruments.

- For shelf 430 x 260 HL (16.9" x 10.2")

Stainless steel tray 430 x 260 · **Mat. No. 1640168**



Platforms (HL)

Heavy load shelf – payload 80 kg (176 lbs).

- Available for M and MPC Rail version
- Available for the L side of the system head
- Shelf 430 x 480 HL (16.9" x 18.9") available for the L side of the system head
- Incl. side equipment rails 25 x 10 mm (1.0" x 0.4"), V2A
- Flexible position changes via click mechanism
- Max. payload 80 kg (176 lbs)
- Up to 4 drawers (HL), optional, max. height 500 mm (16.7")
- Control handle and instrument trays, optional

Options (W x D):

Shelf 430 x 480 HL (16.9" x 18.9") · **Mat. No. 1636317**

Shelf 530 x 480 HL (20.9" x 18.9") · **Mat. No. 1636318**

Shelf 630 x 480 HL (24.8" x 18.9") · **Mat. No. 1636319**

Shelf 730 x 480 HL (28.7" x 18.9") · **Mat. No. 1712533**

Expandable with following adapter plates:

Adapter plate Dräger V500 · **Mat. No. 1946414**

Adapter plate Dräger Evita 1– 4 / Dura · **Mat. No. 1906974**

Adapter plate Nellcor 800 u 840; 1.6 kg (3.5 lbs) · **Mat. No. 1952847**

Adapter plate Siemens MAQUET Servo; mounting version 1 ·

Mat. No. 1952849

Adapter plate Siemens MAQUET Servo; mounting version 2 ·

Mat. No. 1952892

The adapter plates are suitable for dock-on trolley and for all shelves starting from a width of 530 mm (20.9").



Instrument trays

Instrument tray for heavy load shelves for depositing sterile surgical instruments.

Options (W x D):

For shelf 430 x 480 HL (16.9" x 18.9"):

Instrument tray 430 x 480 · **Mat. No. 1640169**

For shelf 530 x 480 HL (20.9" x 18.9"):

Instrument tray 530 x 480 · **Mat. No. 1640190**

For shelf 630 x 480 HL (24.8" x 18.9"):

Instrument tray 630 x 480 · **Mat. No. 1640191**



Side console

Side tray for depositing sterile surgical instruments.

- For mounting to the standard rail 25 x 10 mm (1.0" x 0.4")
- Incl. standard rail clamp for standard rail 25 x 10 mm (1.0" x 0.4")
- Dimensions (W x D): 250 x 370 mm (9.8" x 14.6")

Attachable tray 250 x 370 · **Mat. No. 0337171**



Add-on consoles

Add-on tray for depositing sterile surgical instruments.

- For mounting to the single swivel arm, Comfortline · 1636435
- For mounting to the dual swivel arm, Comfortline · 1636437

Options (W x D):

Additional tray 310 x 310 · **Mat. No. 0337238**

Additional tray 300 x 600 · **Mat. No. 0337337**

Drawers



Various drawer options support hospital workflow in all departments and contribute to the safety of both patients and staff.

Up to four drawers – with and without locking system – per shelf can be mounted under the shelves. Various drawer versions are available for optimal workplace design and safety.



Drawers (ML)

Drawer for keeping working materials.

- Available for M and MPC Rail version
- Up to 2 drawers for mounting
- Height: 125 mm (4.9")

Options:

For mounting under the shelf 530 x 480 ML (20.9" x 18.9"):

Drawer 530 ML · Mat. No. 1851273

For mounting under the shelf 630 x 480 ML (24.8" x 18.9"):

Drawer 630 ML · Mat. No. 1851275



High drawer (ML)

Drawer for keeping working materials.

- Available for M and MPC Rail version
- Height: 250 mm (9.8")

Options:

For mounting under the shelf 530 x 480 ML (20.9" x 18.9"):

Drawer 530 ML double · Mat. No. 1851274

For mounting under the shelf 630 x 480 ML (24.8" x 18.9"):

Drawer 630 ML double · Mat. No. 1851276



Drawers (HL)

Drawer with integrated push to open function for hygienic and ergonomic working.

- Available for M and MPC Rail version
- Up to 4 drawers for mounting
- Height: 125 mm (4.9")

Options:

For mounting under the shelf 430 x 480 HL (16.9" x 18.9"):

Drawer 430 HL · Mat. No. 1636353

For mounting under the shelf 530 x 480 HL (20.9" x 18.9"):

Drawer 530 HL · Mat. No. 1636355

For mounting under the shelf 630 x 480 HL (24.8" x 18.9"):

Drawer 630 HL · Mat. No. 1636358

For mounting under the shelf 730 x 480 HL (28.8" x 18.9"):

Drawer 630 HL · Mat. No. 1636358 (up to 2 drawers)



High drawer (HL)

Drawer with integrated push to open function for hygienic and ergonomic working.

- Available for M and MPC Rail version
- Up to 2 drawers for mounting
- Height: 250 mm (9.8")

Options:

For mounting under the shelf 430 x 480 HL (16.9" x 18.9"):

Drawer 430 HL double · Mat. No. 1636354

For mounting under the shelf 530 x 480 HL (20.9" x 18.9"):

Drawer 530 HL double · Mat. No. 1636356

For mounting under the shelf 630 x 480 HL (24.8" x 18.9"):

Drawer 630 HL double · Mat. No. 1636359

For mounting under the shelf 730 x 480 HL (28.8" x 18.9"):

Drawer 630 HL double · Mat. No. 1636359 (only 1 drawer)



Keyboard drawer (HL)

Drawer with integrated push to open function for accommodating a keyboard for hygienic and ergonomic working.

- Available for M and MPC Rail version
- For accommodating a keyboard
- Combine with drawers (HL) and storage tray (HL)
- Height: 125 mm (4.9")

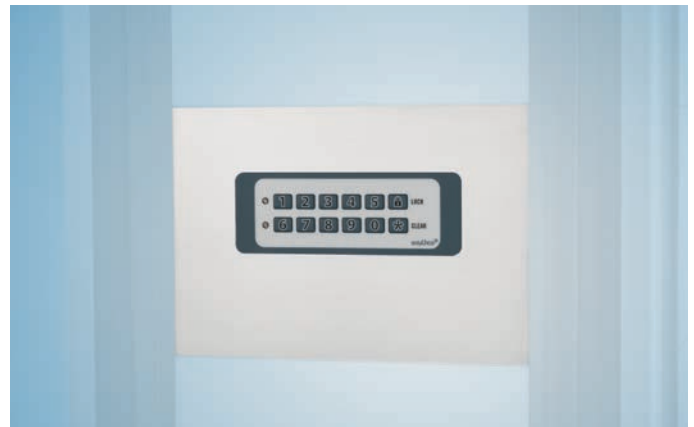
Options:

For mounting under the shelf 530 x 480 HL (20.9" x 18.9"):

Drawer 530 HL for keyboard · Mat. No. 1636357

For mounting under the shelf 630 x 480 HL (24.8" x 18.9"):

Drawer 630 HL for keyboard · Mat. No. 1636390



Electronic locking system

Electronic locking system for drawers (HL) for safe storage of working materials and protection against unauthorized access.

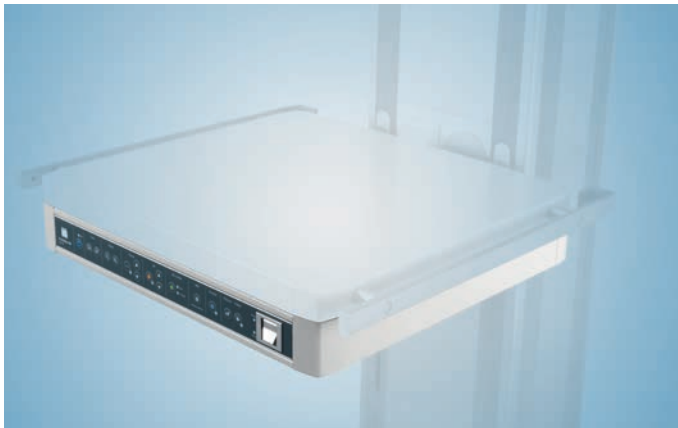
- Available for MPC Rail version
- Suitable for TruPort keypad module or safety system installed on site
- Up to 2 drawers (HL) can be controlled simultaneously

Locking system drawer HL · Mat. No. 1776300

Optional: TruPort keypad module for operating the electronic locking system via number code (see picture).

- Available for the L side of the system head
- Independent of the safety system installed on site
- Height: 125 mm (4.9")

Keypad module L · Mat. No. 1776333



Slide-in tray TruVidia HD

Slide-in tray for accommodating the controller of TruVidia™ Camera HD / 3D.

- Available for M and MPC Rail version
- For mounting under the shelf 530 x 480 HL (20.9" x 18.9")
- Shelf payload: 50 kg (110 lbs)

Storage shelf 530 HL TruVidia HD · **Mat. No. 1771244**



Storage tray (HL)

Storage tray for accommodating working materials.

- Available for M and MPC Rail version
- Storage tray open at the front
- Combine with drawers (HL) and keyboard drawer (HL)
- Height: 125 mm (4.9")

Options:

For mounting under the shelf 430 x 480 HL (16.9" x 18.9"):

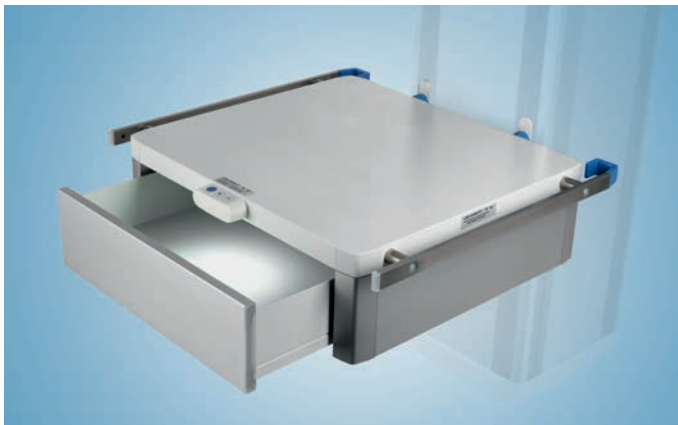
Storage shelf 430 HL · **Mat. No. 1636391**

For mounting under the shelf 530 x 480 HL (20.9" x 18.9"):

Storage shelf 530 HL · **Mat. No. 1636392**

For mounting under the shelf 630 x 480 HL (24.8" x 18.9"):

Storage shelf 630 HL · **Mat. No. 1636393**



AmbientLine Desk

Drawer lighting for shelves (HL) for improving the working conditions.

- Available for MPC Rail version
- Quick and safe access to only medical supplies

AmbientLine Desk · **Mat. No. 1636352**

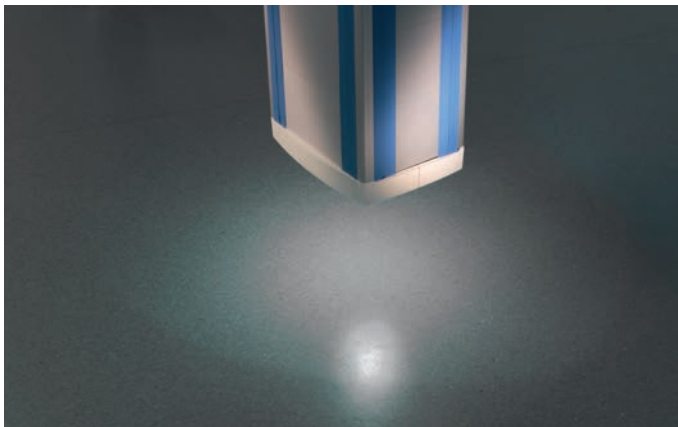
Optional: Automatic control of drawer lighting via push to open function

Control via Drawer · **Mat. No. 1495009**

Lighting

Various lighting options enhance job safety for the hospital personnel and improve working conditions in both the OR and ICU.

The AmbientLine™ Floor and Ceiling Lighting System create a safe and effective working environment in dimmed clinical situations. The AmbientLine™ Desk Lighting System and rotatable LED lights provide optimal illumination for the workspace.

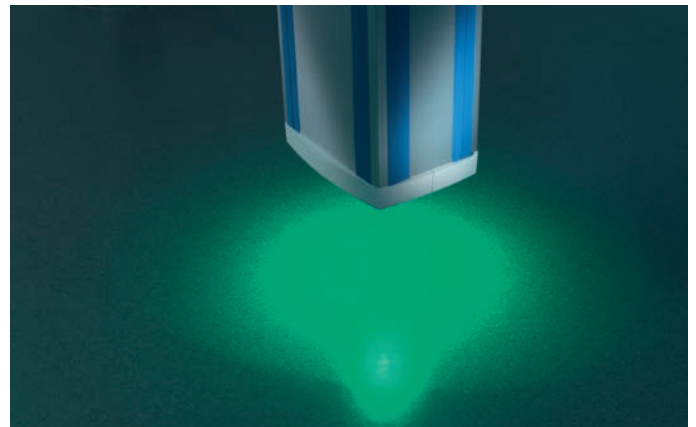


AmbientLine Floor (white)

Floor lighting with white LEDs for quick and safe orientation in dimmed rooms.

- Available for M and MPC Rail version
- Integrated optionally in either the system head or subsystem head for a pipe length of 400 mm (15.8")
- Requires controller for AmbientLine 1495018 and Switch / dimmer 1495014

AmbientLine Floor – White · Mat. No. 1495004

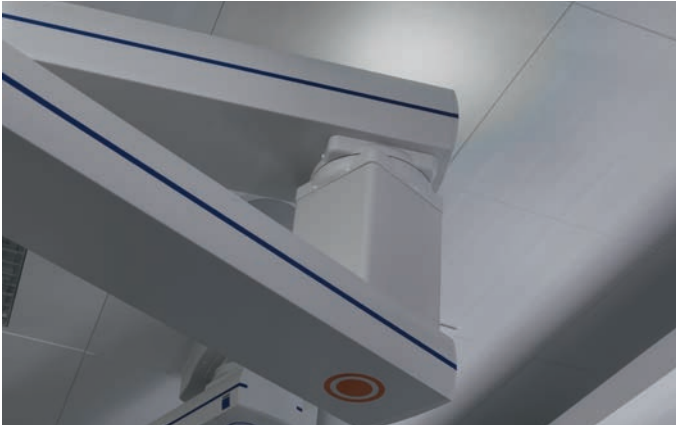


AmbientLine Floor (RGB)

Floor lighting with colored RGB LEDs, particularly suitable for endoscopic interventions.

- Available for M and MPC Rail version
- Integrated optionally in either the system head or subsystem head for a pipe length of 400 mm (15.8")
- Requires controller for AmbientLine 1495018 and Switch / dimmer 1495014

AmbientLine Floor – RGB · Mat. No. 1495005

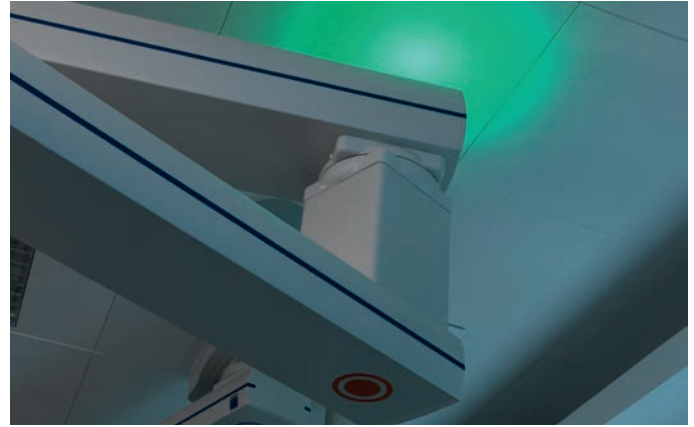


AmbientLine Ceiling (white)

Ceiling lighting with white LEDs for quick and safe orientation in dimmed rooms.

- Available for M and MPC Rail version
- Integrated in outer horizontal support arm
- Requires controller for AmbientLine 1495018 and Switch / dimmer 1495014

AmbientLine Ceiling – White · Mat. No. 1495006



AmbientLine Ceiling (RGB)

Ceiling lighting with colored RGB LEDs, particularly suitable for endoscopic interventions.

- Available for M and MPC Rail version
- Integrated in outer horizontal support arm
- Requires controller for AmbientLine 1495018 and Switch / dimmer 1495014

AmbientLine Ceiling – RGB · Mat. No. 1495007



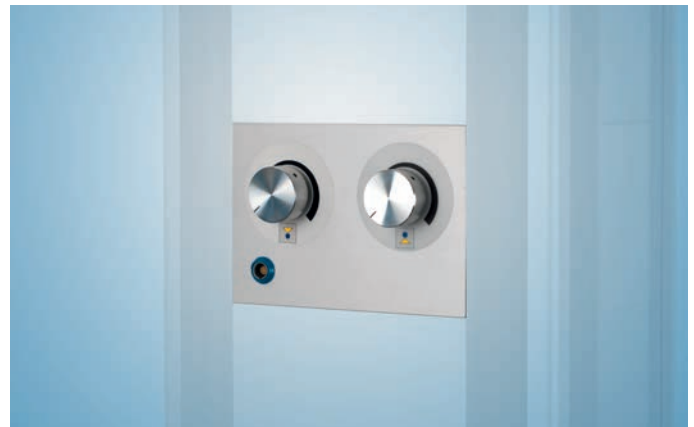
internal, invisible part
of the device

Controller for AmbientLine

Required module for AmbientLine™ Floor and AmbientLine™ Ceiling Lighting System.

- Available for M and MPC Rail version
- Consisting of an electronic control unit and power supply unit

Base Module Floor / Ceiling · Mat. No. 1495018

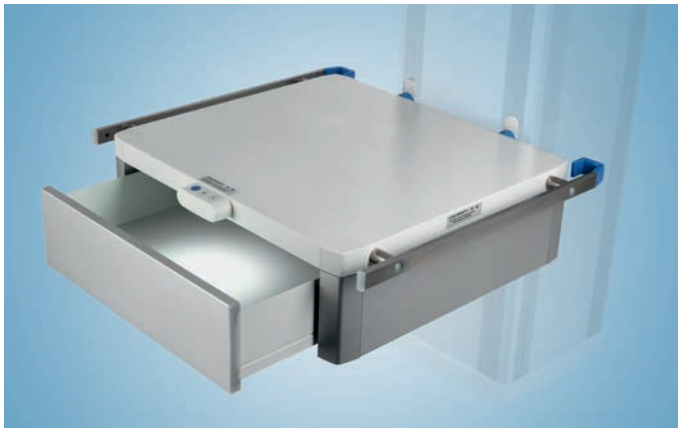


Switch / dimmer

Switch / dimmer for controlling the AmbientLine™ Floor and Ceiling Lighting System.

- Available for M and MPC Rail version
- Available for the L side of the system head
- 1 dimmer for AmbientLine Floor (picture shows 2 dimmers)
- 1 dimmer for AmbientLine Ceiling (picture shows 2 dimmers)

Switch / Dimmer · Mat. No. 1495014



AmbientLine Desk

Drawer lighting for shelves (HL) for improving the working conditions of personnel.

- Available for MPC Rail version
- Quick and safe access to medical supplies

AmbientLine Desk · Mat. No. 1636352

Optional: Automatic control of drawer lighting via push to open function

Control via Drawer · Mat. No. 1495009



Rotatable LED lamp

Rotatable LED light for improving the working conditions by means of the optimal illumination of the workplace.

- Available for MPC Rail version
- Available for the M and L side of the system head
- Flexible position change via click mechanism
- Dimmable light

Rotatable LED light · Mat. No. 1636438



LED examination light

Flexibly positionable examination light, white.

- Available for M and MPC Rail version
- Incl. clamping for equipment rail 25 x 10 mm (1.0" x 0.4")
- Voltage: 220–240 V; 50 / 60 Hz
- Mains connection with 2-pole Euro-plug
- Illumination 40,000 Lux / 0.5 m (19.7")

LED examination light · Mat. No. 2064257



Light, X-Ray shield and monitor arm system adaptation on pendant arm

Pendant mounted adapter for attaching an additional light source to the support arm.

- Adaption of a TruLight Surgical Light, iLED Surgical Light, X-Ray shield Portegra/Portegra 2 and monitor arms
- Suitable for standard support system 110 mm (4.3")

Adaptation – lights to support arm HL / ML · Mat. No. 0337342



Light adaption on the pendant arm (TruLight 1000)

Pendant mounted adapter for attaching an additional light source to the support arm.

- Adapter for a TruLight™ 1000 Examination Light on the support arm
- Not suitable for Trumpf Medical support system Slimline

Adaptation – lights to support arm HL / ML · **Mat. No. 1720018**

Monitor holders

Monitor holders serve for the safe and flexible attachment of monitors to the system head – smoothly adapted to the individual working situation in order to ensure that you have a comprehensive overview at all times.

The monitor holders can be easily mounted and positioned on the system head without tools. Thanks to the cable conduit integrated in the monitor support arm, the holders have a hygienic surface and are easy to clean.



Support arm 300 (VESA)

Simple swivel arm with monitor holder for safe and flexible attachment of monitors on the system head.

- Available for M and MPC Rail version
- Adapter plate for VESA 75 / 100
- Support arm length 300 mm (11.8")
- Maximum monitor weight: 18 kg (40 lbs)

Attachment via:

- Adapter, monitor support arm, ComfortLine 1640193
- Can be equipped with holding clamp – pump rod \varnothing 25 mm (1.0") 0337209

Swivel arm 300 mm – VESA 75 / 100 · Mat. No. 0337386



Support arm 400 (VESA)

Simple swivel arm with monitor holder for safe and flexible attachment of monitors on the system head.

- Available for M and MPC Rail version
- Adapter plate for VESA 75 / 100
- Support arm length 400 mm (15.8")
- Maximum monitor weight: 13.5 kg (29 lbs)

Attachment via:

- Adapter, monitor support arm, ComfortLine 1640193
- Can be equipped with holding clamp – pump rod \varnothing 25 mm (1.0") 0337209

Swivel arm 400 mm – VESA 75 / 100 · Mat. No. 0337387



Support arm, 2-fold 240 (VESA)

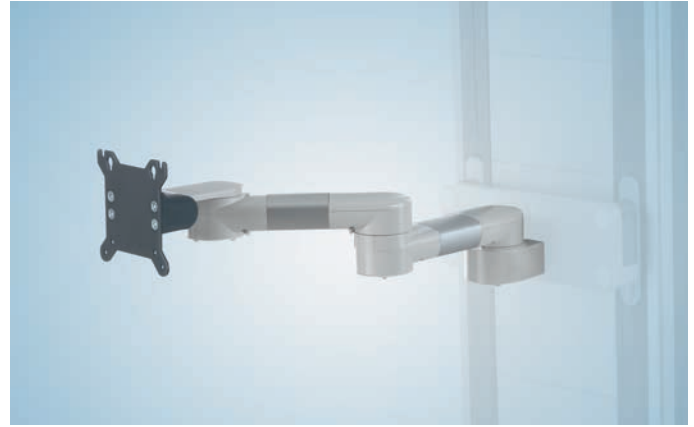
Dual swivel arm with monitor holder for safe and flexible attachment of monitors on the system head.

- Available for M and MPC Rail version
- Adapter plate for VESA 75 / 100
- Support arm length 240 mm (9.5") + 240 mm (9.5")
- Maximum monitor weight: 15 kg (33 lbs)

Attachment via:

- Adapter, monitor support arm, ComfortLine 1640193
- Can be equipped with holding clamp – pump rod Ø 25 mm (1.0") 0337209

Double swivel arm 240 mm – VESA 75 / 100 · **Mat. No. 0337432**



Support arm, 2-fold 300 (VESA)

Dual swivel arm with monitor holder for safe and flexible attachment of monitors on the system head.

- Available for M and MPC Rail version
- Adapter plate for VESA 75 / 100
- Support arm length 300 mm (11.8") + 300 mm (11.8")
- Maximum monitor weight: 12,5 kg (27 lbs)

Attachment via:

- Adapter, monitor support arm, ComfortLine 1640193
- Can be equipped with holding clamp – pump rod Ø 25 mm (1.0") 0337209

Double swivel arm 300 mm – VESA 75 / 100 · **Mat. No. 0337433**



Height adjustable support arm 300 (VESA)

Adjustable in height, simple swivel arm with monitor holder for safe and flexible attachment of monitors on the system head.

- Available for M and MPC Rail version
- Adapter plate for VESA 75 / 100
- Support arm length height adjustable 300 mm (11.8")
- Maximum monitor weight: 15 kg (33 lbs)
- Attachment via: Adapter, monitor support arm, ComfortLine 1640193

Swivel arm HV 300 mm – VESA 75 /100 · **Mat. No. 0337460**



Height adjustable support arm, 2-fold 300 (VESA)

Adjustable in height, dual swivel arm with monitor holder for safe and flexible attachment of monitors on the system head.

- Available for M and MPC Rail version
- Adapter plate for VESA 75 / 100
- Support arm length 300 mm (11.8") + height adjustable 300 mm (11.8")
- Maximum monitor weight: 15 kg (33 lbs)
- Attachment via: Adapter, monitor support arm, ComfortLine 1640193

Double swivel arm HV 300 mm – VESA 75 /100 · **Mat. No. 0337468**



Height adjustable support arm, 2-fold 300 (VESA, keyboard)

Adjustable in height, dual swivel arm with monitor holder for safe and flexible attachment of monitors on the system head.

- Available for M and MPC Rail version
- Adapter plate for VESA 75 / 100 and keyboard / mouse 580 x 200 mm (22.8" x 7.9")
- Support arm length 300 mm (11.8") + height adjustable 300 mm (11.8")
- Maximum monitor weight: 15 kg (33 lbs)
- Attachment via: Adapter, monitor support arm, ComfortLine 1640193

Double swivel arm HV 300 mm – VESA, Keyb. · **Mat. No. 0337478**



Height adjustable support arm, 2-fold 300 (Philips)

Adjustable in height, dual swivel arm with monitor holder for the safe and flexible attachment of monitors on the system head.

- Adapter plate, Philips
- Available for M and MPC Rail version
- Support arm length 300 mm (11.8") + height adjustable 300 mm (11.8")
- Maximum monitor weight: 22 kg (49 lbs)
- Attachment via: Adapter, monitor support arm, ComfortLine 1640193

Double swivel arm HV 300 mm Philips · **Mat. No. 1938191**



Support arm, 2-fold 300 (Philips)

Dual swivel arm with monitor holder for the safe and flexible attachment of monitors on the system head.

- Adapter plate, Philips
 - Available for M and MPC Rail version
 - Support arm length 300 mm (11.8") + 300 mm (11.8")
 - Maximum monitor weight: 12.5 kg (28 lbs)
- Attachment via:
- Adapter, monitor support arm, ComfortLine 1640193
 - Holding clamp – pump rod Ø 25 mm (1.0") 0337209

Double swivel arm 300 mm – Philips · **Mat. No. 1938188**



VESA monitor suspension for pump pole holder Ø 25 mm (75 / 100)

Simple monitor holder for safe and flexible attachment of monitors on the system head.

- Available for M and MPC Rail version
 - Adapter plate for VESA 75 / 100
 - Maximum monitor weight: 18 kg (40 lbs)
- Attachment via:
- Swivel arm, simple, ComfortLine 1636435
 - Swivel arm, dual, ComfortLine 1636437
 - Equipment rail clamp for pump rod 0337088

VESA adaptation – uniPORT carrying arm · **Mat. No. 0337373**



VESA monitor suspension (75 / 100)

Simple monitor holder for safe and flexible attachment of monitors on the system head.

- Available for M and MPC Rail version
 - Adapter plate for VESA 75 / 100
 - Maximum monitor weight: 18 kg (40 lbs)
- Attachment via:
- Adapter, monitor support arm, ComfortLine 1640193
 - Can be equipped with holding clamp – pump rod \varnothing 25 mm (1.0") 0337209

VESA Monitor adaptation 75 / 100 · **Mat. No. 0337331**



Adapter for monitor support arm

Adapter with click mechanism, suitable for accommodating all monitor support arms.

- Available for M and MPC Rail version
- Available for the S and L side of the system head
- Flexible positioning on the system head
- Max. payload 30 kg (66 lbs) / 102 Nm

Adapter monitor holder ComfortLine · **Mat. No. 1640193**



Holding clamp for pump rod

Adapter for mounting monitor support arms to the pump rods \varnothing 25 mm (1.0").

- Available for M and MPC Rail version
- Suitable for accommodating all monitor support arms

Fixation clamp – pump rod 25 mm · **Mat. No. 0337209**



Adapter for CIM / GCX channel

Adapter for mounting products with GCX or CIM channel interface.

- Available for M and MPC Rail version
- Available for the S and L side of the system head
- Suitable for accommodating all support arms with GCX or CIM channel interface
- For applications including monitoring, suction devices, third-party products with rail-compatible interface
- Existing monitor arms can still be used
- Flexible position change via click mechanism
- Max. payload 30 kg (66 lbs) / 102 Nm

Adapter TruPort CIM Channel CL · **Mat. No. 1776363**



Holder, system head column for CIM / GCX channel

Adapter for mounting products with GCX or CIM channel interface.

- Available for M and MPC Rail
- Suitable for accommodating all support arms with GCX or CIM channel interface
- For applications including monitoring, suction devices, third-party products with rail-compatible interface
- Attachment to the system head column
- Attachment of monitor arms above the system heads possible
- Existing monitor arms can still be used
- Max. payload 2 x 30 kg (66 lbs) / 102 Nm

Holder CIM Channel system head tube · **Mat. No. 177757**

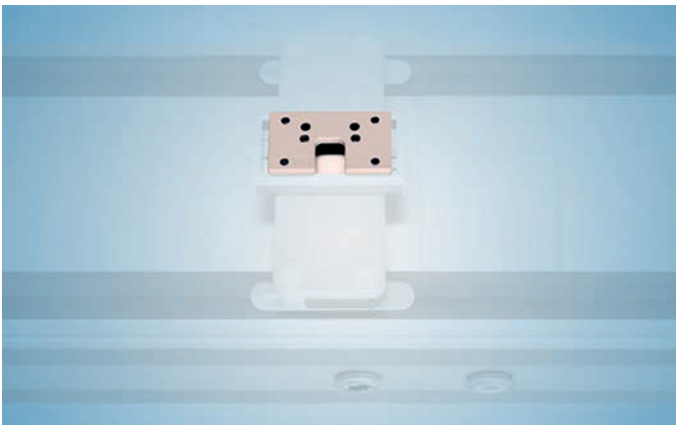


Adapter for CIM channel vertical

Adapter to mount on vertical CIM channel, suitable for all monitor holders.

- Available for M and MPC Rail Version
- Attachment via: Adapter TruPort CIM Channel CL 1776363
- Suitable for accommodating all monitor support arms

Adapter for CIM channel vertical · **Mat. No. 1950563**

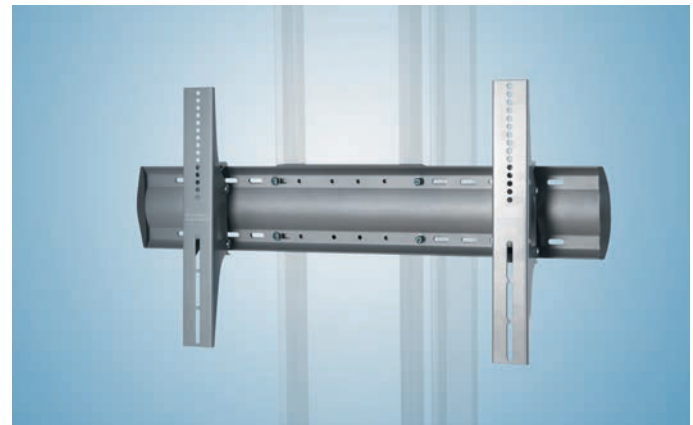


Adapter for CIM channel horizontal

Adapter to mount on horizontal CIM channel, suitable for VESA Monitor adaptation 75 / 100.

- Available for TruPort Horizontal
- Available for M and MPC Rail Version
- Attachment via: Adapter TruPort CIM Channel CL 1776363
- Suitable for VESA Monitor adaptation 75 / 100 0337331

Adapter for CIM channel horizontal · **Mat. No. 1950564**



Ergotron carrier for large monitors

Monitor adaption for monitor sizes of 42 inch or larger and weights of up to 174 lbs (79 kg).

- VESA MIS-D / E / F
- Mounting holes spacing ranges horizontal 100 mm / 3.9" (min) to 800 mm / 31.5" (max)
- Mounting holes spacing ranges vertical 100 mm / 3.9" (min) to 450 mm / 17.7" (max)
- 12,3 kg (27 lbs)

Ergotron adapter · **Mat. No. 1938935**

Lifting systems

The lifting system integrated in the pendant head serves as an easy and safe docking and lifting solution for heavy endoscopy, anesthesia and respiratory devices – optimal foot space and floor clearance.

Lifting systems are available for both height adjustable and non-height adjustable pendants.

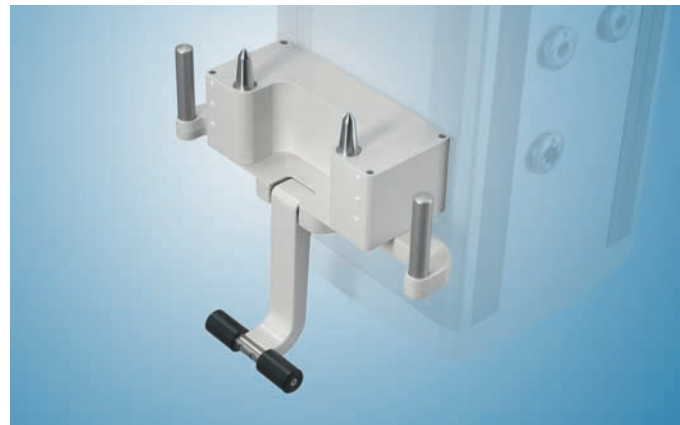


Hoisting system

Lifting system integrated in the pendant head, height adjustable with electric motor, for simple docking and lifting of endoscopic, anaesthetic and respiration devices into the desired position.

- Available for MPC Rail version
- Available for L system heads and heavy load pendants
- Incl. double pivot support with safety scanning pushbuttons for docking and automatic motion stop in case of collision
- Load up to 290 kg (639 lbs) / 1250 Nm
- Max. height adjustment 600 mm (23.6")
- Optional supporting bolts for fixing in the horizontal position:
 - Support pins fix 1466180
 - Support pins flexible 0337395 (see picture)

Integrated Lifter HL – Double pivot · **Mat. No. 1636419**



Equipment adapter

Double pivot support integrated in the system head for non-height adjustable pendants, for the simple attachment of endoscopic, anaesthetic and respiration devices in the desired position.

- Available for M and MPC Rail version
- Optional supporting bolts for fixing in the horizontal position:
 - Support pins fix 1466180 (see picture)
 - Support pins flexible 0337395

Double pivot equipment adapter · **Mat. No. 1636431**



Height-adjustable equipment adapter

Double pivot support integrated in the system head for height adjustable pendants, for simple docking and lifting of endoscopic, anaesthetic and respiration devices in the desired position.

- Available for M and MPC Rail version
 - Incl. safety switches for docking and automatic motion stop in case of collision
 - Max. height adjustment 700 mm (27.6")
 - Max. lifting speed 30 mm/s (1.2"/s)
- Optional supporting bolts for fixing in the horizontal position:
- Support pins fix 1466180 (see picture)
 - Support pins flexible 0337395

Double pivot equipment adapter – HV · Mat. No. 1636430

Equipment transport

The transfuPORT™ Mobile Infusion Holder is a solution for the safe, efficient and speedy transport of patients across various departments of the hospital.



The docking points can be attached to the system head of the TruPort™ Supply Unit, to the patient bed and the OR table. This ensures that the infusion carrier is always positioned close to the patient and repositioned flexibly.



Mobile infusion carrier transfuPORT

Mobile infusion carrier for safe patient transport.

- Available for M and MPC Rail version
- Incl. adapter
- Incl. pump rod 650 x 25 mm (25.6" x 1.0")

Pivot support for additional ordering:

- transfuPORT pivot support – OPT / bed 0337237
- transfuPORT pivot support – GS 25x10 0337223
- transfuPORT pivot support 0337204

transfuPORT mobile infusion holder · **Mat. No. 0337346**



Pivot support transfuPORT (OPT, bed)

Pivot support for transfuPORT™ Mobile Infusion Holder for OR table or patient bed.

- Available for M and MPC Rail version
- Incl. clamp for equipment rail 25 x 10 mm (1.0" x 0.4")

transfuPORT pivot bracket – ORT / bed · **Mat. No. 0337237**



Pivot support transfuPORT (Equipment rails 25x10)

Pivot support for transfuPORT™ Mobile Infusion Holder for attachment to equipment rails 25 x 10 mm (1.0" x 0.4").

- Available for M and MPC Rail version

transfuPORT pivot bracket – rail 25 x 10 · **Mat. No. 0337223**



Pivot support transfuPORT (swivel arms)

Pivot support for transfuPORT™ Mobile Infusion Holder for attachment to swivel arms.

- Available for M and MPC Rail version

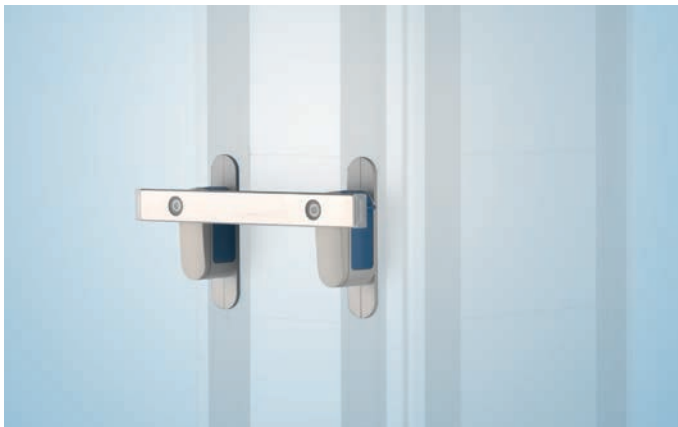
transfuPORT taper pivot bracket · **Mat. No. 0337204**

Equipment rails

The equipment rails of the TruPort™ Supply Unit are used to attach accessories at any side and along the entire length of the system head – quickly and easily for individual workplace design.



The position of the equipment rails can be adjusted to the corresponding work situation at any time using the click mechanism. All equipment rails have a maximum payload of 20 kg (44 lbs) and a plastic end piece as shock protection.



Equipment rail 220

Equipment rail horizontal 220.

- Available for M and MPC Rail version
- Available for the M system head
- Flexible position change via click mechanism
- V2A equipment rail 220 mm (8.7")
- Max. payload 20 kg (44 lbs)

Equipment rail horiz. 220 ComfortLine · Mat. No. 1636413



Equipment rail 310

Equipment rail horizontal 310.

- Available for M and MPC Rail version
- Available for the M and L side of the system head
- Flexible position change via click mechanism
- V2A equipment rail 310 mm (12.2")
- Max. payload 20 kg (44 lbs)

Equipment rail horiz. 310 ComfortLine · Mat. No. 1636414

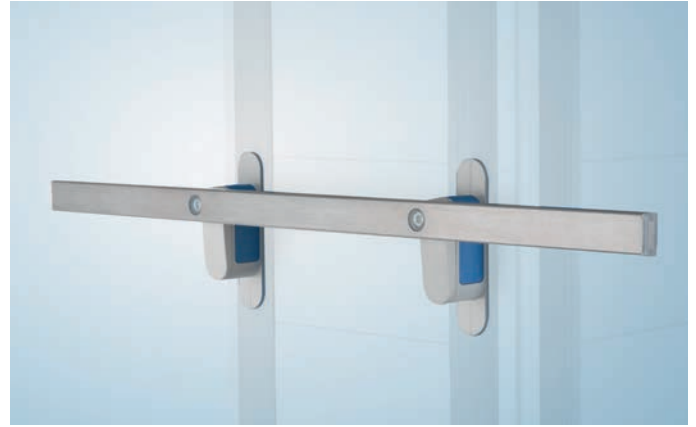


Equipment rail 450

Equipment rail horizontal 450.

- Available for M and MPC Rail version
- Available for the M and L side of the system head
- Flexible position change via click mechanism
- V2A equipment rail 450 mm (17.7")
- Max. payload 20 kg (44 lbs)

Equipment rail horiz. 450 ComfortLine · Mat. No. 1636415



Equipment rail 600

Equipment rail horizontal 600.

- Available for M and MPC Rail version
- Available for the M and L side of the system head
- Flexible position change via click mechanism
- V2A equipment rail 600 mm (23.6")
- Max. payload 20 kg (44 lbs)

Equipment rail horiz. 600 ComfortLine · Mat. No. 1636416

Cable management

Cable management protects against damage and contamination during use – for increased operational safety and for meeting high hygienic standards.



The TruPort™ Supply Unit offers various solutions for the implementation of professional cable management.



Compartment module

Storage compartment module L for the safekeeping of small objects or cables in the system head.

- Available for M and MPC Rail version
- Available for the L side of the system head
- Push to open / close function
- Height 125 mm (4.9"), storage compartment volume 1,000 ccm (33.8 fl oz)

Storage module L · Mat. No. 1717421



Disposable cable box (set)

Disposable cable box for the safe storage of cables.

- Available for M and MPC Rail version
- Available for the L side of the system head
- For the intermediate space between the system head and the component
- Max. payload 0,5 kg (1 lbs)
- 5 pieces per set per order

Disposable cable box, 5 pcs. (set) · Mat. No. 1777448



Module for non-heating apparatus

Module L for non-heating apparatus with two fixed installed IEC cables for the power supply of external devices independent of the corresponding national standard. Approx. 90% of all external devices are connected to the power supply using these plugs.

- Available for M and MPC Rail version
- Available for the L side of the system head
- Suitable for WAGO wiring
- Suitable for PowerLine wiring
- Incl. 2 x IEC 320 connecting cable
- Hygienic supply of medical equipment
- Push to open function for opening the cover
- Incl. control lamp for operating status indication
- Height 125 mm (4.9")

Power Supply Module L · **Mat. No. 1776338**



Cover, cable management

Cable outlet socket incl. strain relief mechanism and hygienic cable routing.

- Frame dimensions: 80 x 80 mm (3.1" x 3.1") (Picture shows 2 covers)

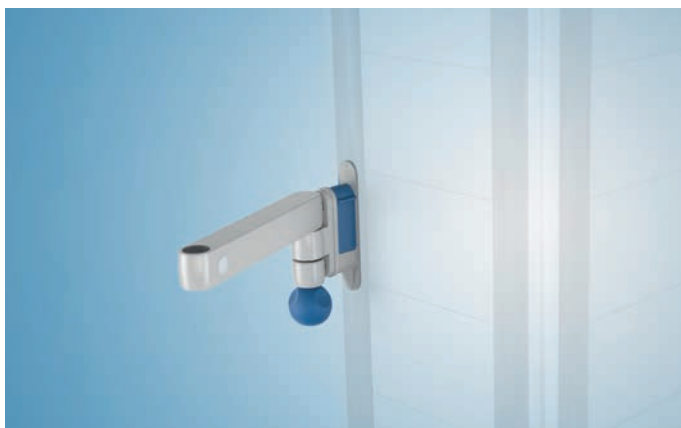
Cable management cover · **Mat. No. 1542153**

Infusion management

Efficient infusion management optimizes the workflow in the OR and ICU and ensures continuous patient care.



The accessories for infusion management of the TruPort™ Supply Unit offer a selected range of pump rods, swivel arms, clamps, equipment rails, etc. for efficient infusion management.



Swivel arm, single

Single swivel arm incl. click mechanism for accommodating pump poles and infusion bottle holders.

- Available for M and MPC Rail version
- Flexible position change via click mechanism
- Pump poles Ø 25 mm (1.0")
- Infusion bottle holder Ø 25 mm (1.0")
- 4 depth adjustment positions, contacted throughout
- Length 200 mm (7.9")
- Max. payload 40 kg (88 lbs)

Swivel arm single ComfortLine · Mat. No. 1636435



Swivel arm, 2-fold

Dual swivel arm incl. click mechanism for accommodating pump poles or infusion bottle holders.

- Available for M and MPC Rail version
- Flexible position change via click mechanism
- Pump poles Ø 25 mm (1.0")
- Infusion bottle holder Ø 25 mm (1.0")
- 4 depth adjustment positions, contacted throughout
- Length 400 mm (15.8")
- Max. payload 20 kg (44 lbs)

Swivel arm double ComfortLine · Mat. No. 1636437



Equipment rail 600

Equipment rail horizontal 600.

- Available for M and MPC Rail version
- Available for the M and L side of the system head
- Flexible position change via click mechanism
- V2A equipment rail 600 mm (23.6")
- Max. payload 20 kg (44 lbs)

Equipment rail horiz. 600 ComfortLine · **Mat. No. 1636416**



Infusion pump poles

Infusion pump poles 300 mm x 25 mm (11.8" x 1.0") up to 1,500 mm x 25 mm (59" x 1.0").

- Available for M and MPC Rail version
- Diameter Ø 25 mm (1.0")

Options (L x Ø, in mm):

Infusion pump rod 300 x 25 · **Mat. No. 0337027**

Infusion pump rod 650 x 25 · **Mat. No. 0337057**

Infusion pump rod 1000 x 25 · **Mat. No. 0337071**

Infusion pump rod 1300 x 25 · **Mat. No. 0337073**

Infusion pump rod 1500 x 25 · **Mat. No. 0337085**



Infusion bottle holder

Infusion bottle holder incl. quadruple bottle cross and drain glass.

- Available for M and MPC Rail version
- Diameter Ø 25 mm (1.0")
- Height adjustment via single hand safety adjustment mechanism, from 1,120 mm (44.1") to 1,980 mm (78")

Infusion bottle holder 1120 – 1980 x 25 · **Mat. No. 0337270**



Quadruple hook for infusion pump pole

Quadruple hook for infusion pump pole.

- Available for M and MPC Rail version

Quadruple hook for Infusion pump rod · **Mat. No. 0337106**



Single hook for infusion pump pole

Single hook for infusion pump pole.

- Available for M and MPC Rail version

Single hook for infusion pump rod · **Mat. No. 0337026**



Equipment rail clamp for pump pole

Equipment rail clamp for pump pole.

- Available for M and MPC Rail version
- Suitable for equipment rails 25 x 10 mm (1.0" x 0.4"), 30 x 10 mm (1.2" x 0.4"), Uniflex and Duoflex rails
- Suitable for pump poles Ø 25 mm (1.0")

Equipment rail clamp for pump rod · **Mat. No. 0337088**



Equipment rail 25x10 / 300 (AL)

Equipment rail 25 x 10 / 300 mm (1.0" x 0.4" / 11.9").

- Available for M and MPC Rail version

Equipment rail 25 x 10 / 300 mm AL · **Mat. No. 0337011**



Equipment rail 25x10 / 500 (AL)

Equipment rail 25 x 10 mm / 500 mm (1.0" x 0.4" / 19.7").

- Available for M and MPC Rail version

Equipment rail 25 x 10 / 500 mm AL · **Mat. No. 0337016**



Infusion hook rail

Infusion hook rail with 4 infusion hooks.

- Available for M and MPC Rail version

Infusion hook rail with 4 infusion hooks · **Mat. No. 0337089**



Support rail with clamp

Support rail with clamp.

- Available for M and MPC Rail version

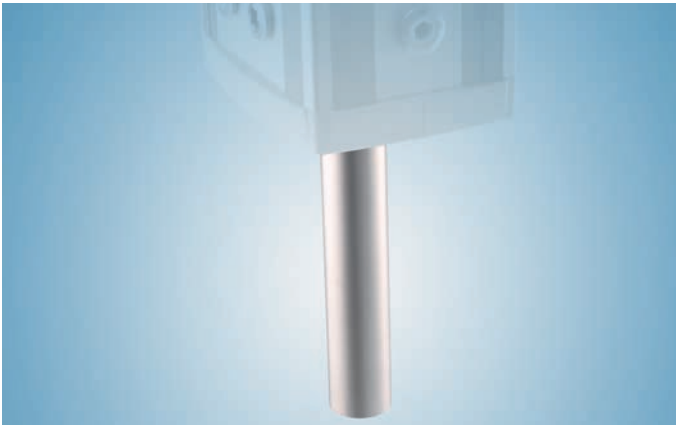
Distance rail with clamp · **Mat. No. 0337149**

Device holders

In addition to the accommodation of shelves and monitor holders, the device holders provide further options to support various medical equipment.



The components can be mounted above and below the system head or easily attached using the click mechanism.



Subsystem head

Subsystem head for accommodating devices such as docking carts and suction containers.

- Available for M and MPC Rail version

Options (L in mm):

Subsystem head 400 without rail carrier · **Mat. No. 1819476**

Subsystem head 600 without rail carrier · **Mat. No. 1819480**



Equipment rail carrier for subsystem head

Fixed carrier for docking cart.

- Available for M and MPC Rail version

Equipment rail carrier – sub-system head · **Mat. No. 0337292**



Subsystem head holder, 4-fold

Holder, 4-compartment subsystem head for accommodating suction containers, third-party devices and additional accessories with channel interface.

- Available for M and MPC Rail version
- Max. payload 4 x 5 kg (11 lbs)
- For mounting to the subsystem head:
 - Subsystem head 400 w/o equipment rail carrier 1819476
 - Subsystem head 600 w/o equipment rail carrier 1819480

Holder 4-way of sub boom head · **Mat. No. 1777758**



Adapter, Hermann Miller

Adapter for attachment to the system head in order to be able to benefit from the comprehensive Hermann Miller equipment system. This system includes various shelves, drawers, sorting inserts, etc.

- Available for M and MPC Rail version
- Available for the L side of the system head
- With click mechanism for flexible positioning
- Max. payload 80 kg (176 lbs)

Adapter Hermann Miller · **Mat. No. 1777447**



Dock-on trolley 530

Dock-on trolley to place and fixate medical equipment. Ideal for moving (heavy) medical equipment within the room or between rooms, e.g. for patient transport. The dock-on trolley can be docked to the TruPort™ Supply Unit and fixated there.

- Length vertical profile 620 mm (24.4")
- Shelf space (W x D) 530 x 480 mm (20.9" x 18.9")
- Incl. 1 drawer
- Incl. standard rail 25 x 10 mm (1.0" x 0.4"), V2A
- 53,5 kg (118 lbs)

Dock-on trolley E530 H820 · **Mat. No. 1908302**

Expandable with following adapter plates:

- Adapter plate Dräger V500 · **Mat. No. 1946414**
- Adapter plate Dräger Evita 1- 4 / Dura · **Mat. No. 1906974**
- Adapter plate Nellcor 800 u 840; 1,6kg · **Mat. No. 1952847**
- Adapter plate Siemens MAQUET Servo; mounting version 1 · **Mat. No. 1952849**
- Adapter plate Siemens MAQUET Servo; mounting version 2 · **Mat. No. 1952892**

The adapter plates are suitable for dock-on trolley and for all shelves starting from a width of 530 mm (20.9").

General accessories

The general accessories for TruPort™ Supply Units support efficient workflow and hygienic working environment in the OR and ICU.



The portfolio includes various containers, holders and partitions.



Catheter basket 300

Basket for catheters up to 300 mm (11.8") length, made from stainless steel, with bridge.

- Available for M and MPC Rail version
- Dimensions (H x W x D): 280 x 150 x 100 mm (11" x 5.9" x 3.9")

Basket for suction catheters 300 · **Mat. No. 0337206**



Catheter basket 600

Basket for catheters up to 600 mm (23.6") length, made from stainless steel, with bridge.

- Available for M and MPC Rail version
- Dimensions (H x W x D): 480 x 150 x 100 mm (18.9" x 5.9" x 3.9")

Basket for suction catheters 600 · **Mat. No. 0337214**



Catheter tubular

Catheter tubular for attachment to the equipment rail 25 x 10.

- Available for M and MPC Rail version
- Tubular base adjustable from 360 to 660 mm (14.2" x 26.0") according to the catheter length
- Dimensions (L x W x D): 660 x 120 x 80 mm (26" x 4.7" x 3.1")

Catheter holder · **Mat. No. 0337250**



Rack for disposable bag

Disposable bag rack for attachment to the equipment rail 25 x 10 (1.0" x 0.4").

- Available for M and MPC Rail version

Waste bag holder · **Mat. No. 0337207**



Stainless steel deposit basket

Stainless steel storage basket with 2 hooks.

- Available for M and MPC Rail version
- Dimensions (H x W x D): 3.1" x 6.5" x 4.9" (80 x 165 x 125 mm)

Stainless steel basket with two hooks · **Mat. No. 0337226**

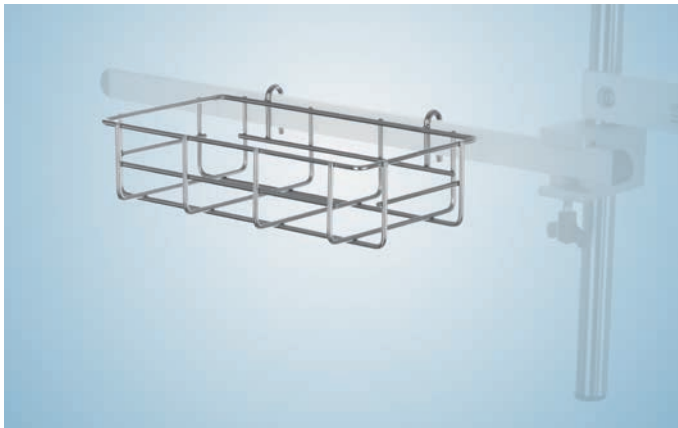


Stainless steel wire deposit basket

Stainless steel storage basket with 2 hooks.

- Available for M and MPC Rail version
- Dimensions (H x W x D): 100 x 300 x 200 mm (3.9" x 11.8" x 7.9")

Stainless steel basket with two hooks · **Mat. No. 0337243**



Glove holder

Glove holder made from stainless steel wire.

- Available for M and MPC Rail version
- Dimensions (H x W x D): 55 x 250 x 130 mm (2.1" x 9.8" x 5.1")

Glove holder stainless steel basket · **Mat. No. 0337188**



Glove holder with hook

Glove holder with hooks for rails for storing glove boxes.

- Available for M and MPC Rail version
- Dimensions (H x W x D): 200 x 134 x 90 mm (7.9" x 5.3" x 3.5")

Glove box holder with hooks for rails · **Mat. No. 0337162**



Curtain partition 1500

Curtain partition with telescopic slide-out, 1,500 mm (59.0") long.

- Available for M and MPC Rail version
- Incl. TCS 151 curtain, flame resistant
- Color: white
- Dimensions (W x H): 170 x 120 mm (6.7" x 4.7")

Patient curtain, telescopic arm 150 cm · **Mat. No. 0337444**



Curtain partition, foldable 1600

Retractable curtain partition with telescopic slide-out, 1,600 mm (63.0") long.

- Available for M and MPC Rail version
- Incl. TCS 151 curtain, flame resistant
- Retractable
- Color: white
- Dimensions (W x H): 170 x 120 mm (6.7" x 4.7")

Patient curtain tiltable, tele.arm 160 cm · **Mat. No. 0337449**

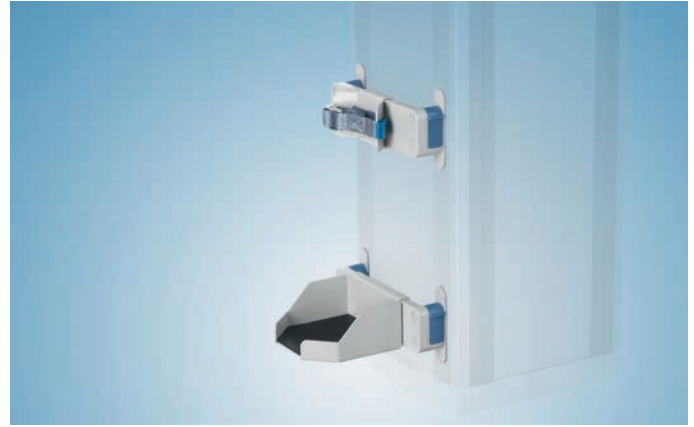


Feeder support arm

Feeder holder arm, universal.

- Available for M and MPC Rail version
- Incl. clamp for equipment rail 25 x 10 mm (1.0" x 0.4")
- Max. fold-out length approx. 1,000 mm (39,4")

Cable support arm universal · **Mat. No. 0337245**



Gas bottle holder

Gas bottle holder for the safe attachment of various, hospital use approved, medical gas bottles with a weight of up to 50 kg (110 lbs).

- Available for M and MPC Rail version
- Flexible position change via click mechanism
- Max. payload 50 kg (110 lbs)

Consisting of:

- Bottle adapter (for placing the bottle)
- Belt angle with belt (for attaching the bottle)

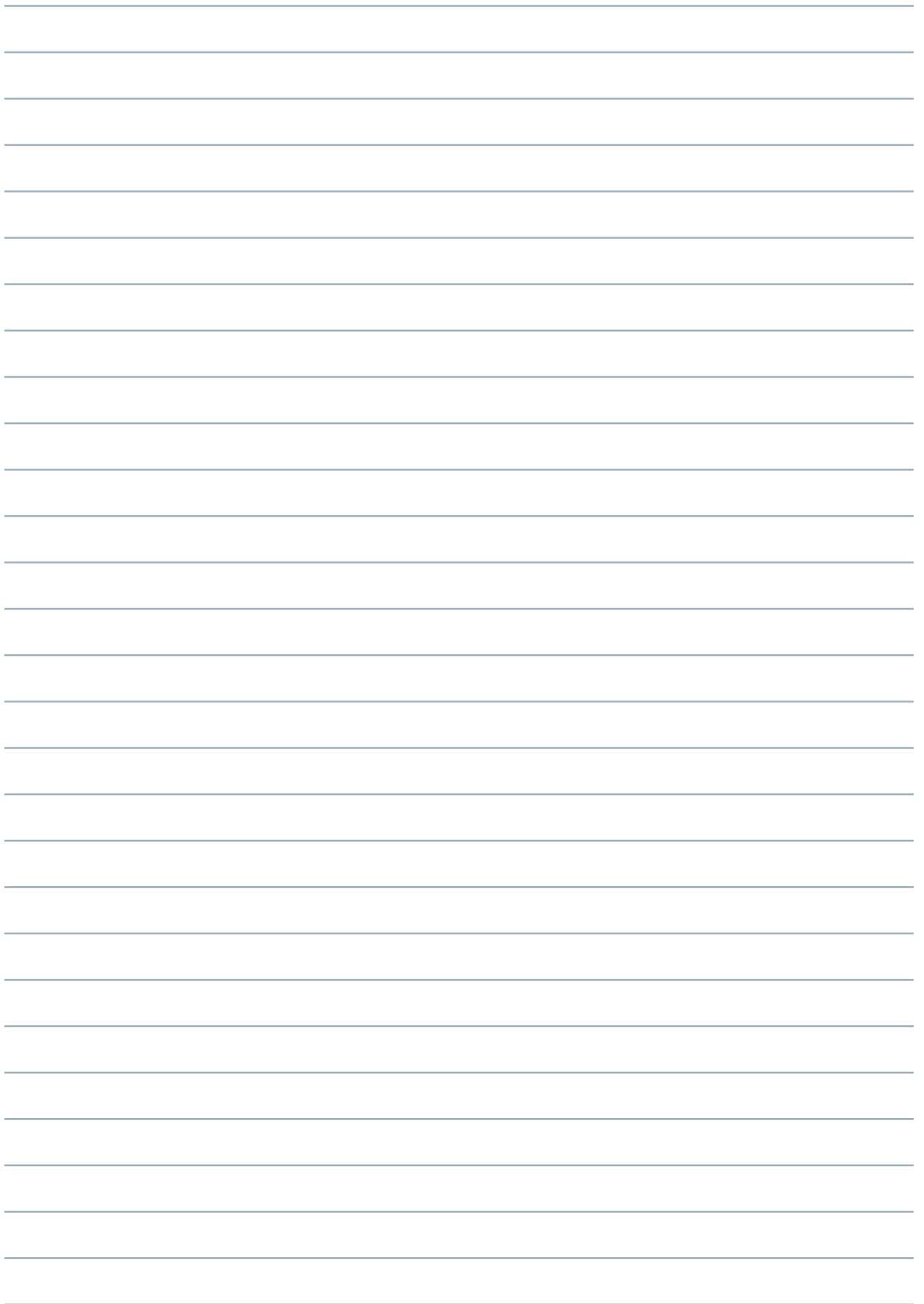
Options:

5 l to 10 l (Ø up to 145 mm / 5.7"):

Gas bottle holder L / D=150 · **Mat. No. 1771220**

5 l to 20 l (Ø up to 200 mm / 7.9"):

Gas bottle holder L / D=200 · **Mat. No. 1771241**





Hillrom™

ABOUT HILLROM

Hillrom is a global medical technology leader whose 10,000 employees have a single purpose: enhancing outcomes for patients and their caregivers by advancing connected care. Around the world, our innovations touch over 7 million patients each day. They help enable earlier diagnosis and treatment, optimize surgical efficiency and accelerate patient recovery while simplifying clinical communication and shifting care closer to home. We make these outcomes possible through connected smart beds, patient lifts, patient assessment and monitoring technologies, caregiver collaboration tools, respiratory care devices, advanced operating room equipment and more, delivering actionable, real-time insights at the point of care. Learn more at hillrom.com.

Discover the difference that simple can make. Learn more at hillrom.com

Hill-Rom reserves the right to make changes without notice in design, specifications and models. The only warranty Hill-Rom makes is the express written warranty extended on the sale or rental of its products. TRUMPF Medizin Systeme GmbH + Co. KG is a subsidiary of Hill-Rom Holdings, Inc.

The Truport® Ceiling Supply Units are intended to serve as an interface to supply devices with mains voltage, data, medical gases, vacuum and compressed air and for holding, placing and storing devices and accessories. Medical device (93/42/EEC): Class IIb Notified Body: TÜV Rheinland GmbH (0197) Manufacturer: Trumpf Medizin Systeme GmbH and co.KG, Carl-Zeiss-Straße 7-9, 07318 Saalfeld, Germany EC Rep.: Trumpf Medizin Systeme GmbH and co.KG, Carl-Zeiss-Straße 7-9, 07318 Saalfeld, Germany This medical device is a regulated health product which, pursuant to such regulation bears a CE mark. Please read this instruction manual very carefully and ensure that you adhere to all safety instructions and requirements regarding the operation and care of the system.